

## **The Designer Collection – modern take on Singapore’s cultural heritage**

### **Singapore Designers Collection**

Based on the theme *Learn from the past, live in the present and dream of the future*, Royal Selangor has invited three of Singapore’s cultural movers to explore and express their perspective of being Singaporean and to give their contemporary interpretation in the pewter collection.

Created in conjunction with Royal Selangor’s 125<sup>th</sup> Anniversary, the collection is in aid of Singapore Heritage Society, a non-governmental organisation dedicated to connecting Singaporeans with their rich historical legacy. Each design will be made in limited edition of a thousand pieces for each design and 50% of the proceeds will be contributed to Singapore Heritage Society.

### **About Singapore Heritage Society**

Singapore Heritage Society is dedicated to the preservation, transmission and promotion of Singapore’s history, heritage and identity. It aims to promote active interest in the cultural life and history of Singapore and to initiate action on research, documentation, publication, collection, display as well as preservation and restoration of skills and items of historical interest.

### **The Designers**

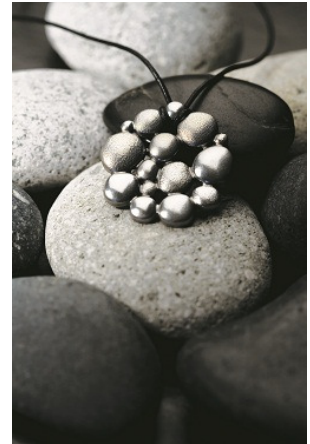
#### **Pendant – David Tay**

David I Tay is one of Asia’s leading interior designers. Renowned for his modern Eastern design concepts, David is the principal of the design consultancy, yi-e Space Ltd, that has attracted leading names in industrial design and multinational corporations. In 1990, David published his biographical record in “Baron’s Who’s Who in Interior Design”.



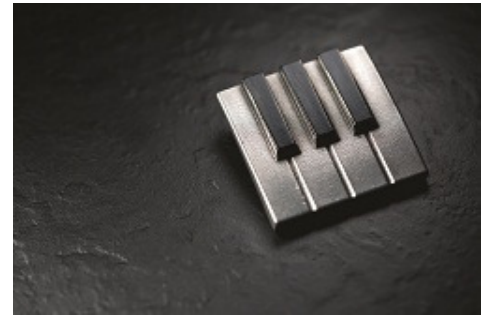
## **Pendant – Dick Lee**

A fashion design graduate of Harrow School of Art in London, musician and composer Dick has been Creative Director of Celia Loe and Island Shop, and has designed collections for Lee Hwa Jewellery and Flower Diamond. Besides holding several Artistic Director positions in performing arts companies, Dick is presently Executive Creative Director of advertising agency dicklee/Chuosenko.



## **Pendant – Eunice Olsen**

Eunice Olsen is a former Nominated Member of Parliament in Singapore, avid volunteer, winner of the Miss Singapore Universe contest in 2000, and accomplished TV host and actress. Olsen was the proud recipient of the prestigious ASEAN Youth Award and was recently nominated as a Young Global Leader representing Singapore at the World Economic Forum. Eunice has been playing the piano since the age of 3 and is now part of a duo, 7 States.



Simple, versatile and effortless stylish, the Designer Collection is priced at **SGD \$90.00** and is available exclusively at Royal Selangor's flagship store at Clarke Quay.

## **Royal Selangor – Clarke Quay**

**Address:** 3A River Valley Road #01-01 Singapore 179020

**Opening hrs:** 9 am – 9 pm (daily)

## Malaysian Designer Collection

Based on the theme *Learn from the past, live in the present and dream of the future*, Royal Selangor has invited eight of Malaysia's cultural movers to explore and express their perspective of being Malaysians and to give their contemporary interpretation in the pewter collection.

Created in conjunction with Royal Selangor's 125<sup>th</sup> Anniversary, the collection is in aid of Badan Warisan Malaysia, a non-government organisation concerned with the conservation and preservation of Malaysia's built heritage. Each design will be made in limited edition of a thousand pieces for each design and 50% of the proceeds will be contributed to Badan Warisan.

### The Designers

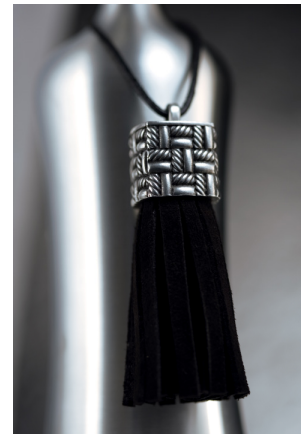
#### Pendant - Asha Gill

The front of the pendant features the 'tree of life' which symbolises connection. Asha believes that we are all Braille is inspired by Elizabeth Kubler Ross' quote; connected in a cosmic, spiritual and biological way. The back features the symbol for antimony which represents our true spirit - wild, free and vibrant. The word 'life' in "*Live, so you do not have to look back and say: 'God, how I have wasted my life.'*"



#### Pendant - Khoon Hooi

The design on the cube shaped pendant is inspired by *mengkuang* weaving which is a craft that has survived for generations. Much like the creation of pewter, *mengkuang* weaving is an art that combines precision with strong craftsmanship. The suede tassels add elegant movement to the pendant.



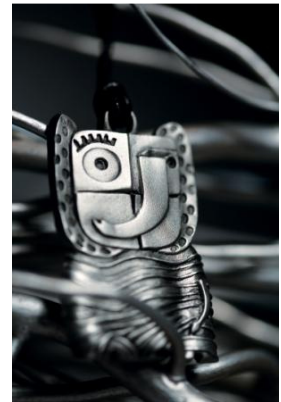
## Pendant - Sheila Majid

The pendant design was inspired by the *kerawang* motif commonly found on traditional Malay woodcarvings. The curves of the *kerawang* motif are fluid and feminine and have been incorporated into the woman's hair. The image of the woman is a tribute to one of Malaysia's legendary songstress, Sheila Majid and is a modern take of a cameo pendant.



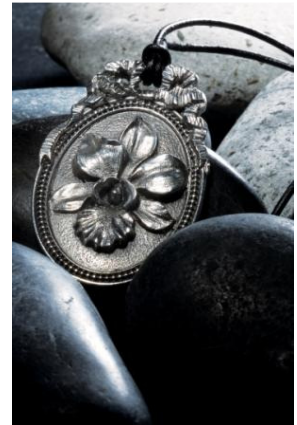
## Pendant - Yusof Gajah

The image of the elephant is linked to wildlife preservation. Elephants and other wildlife are losing their natural habitat. Through the image of an elephant, decorated with patterns derived from wildlife, Yusof wanted to create awareness of the appalling degradation of wildlife's natural habitat-not only in Malaysia but around the world.



## Pendant - Zang Toi

The orchid flower symbolises Zang Toi's childhood in Kuala Krai, Kelantan. His father used to plant orchids in their backyard and till today it is Zang Toi's favourite flower. The design combines the orchid flower and Zang Toi's love for the style of the era of Louis XV from France. The ornate design framing the orchid is taken from the opulent styles of the said era that has inspired some of his designs.



Simple, versatile and effortless stylish, the Designer Collection is priced at **SGD \$90.00** and is available exclusively at Royal Selangor's flagship store at Clarke Quay.

## Royal Selangor – Clarke Quay

**Address:** 3A River Valley Road #01-01 Singapore 179020

**Opening hrs:** 9 am – 9 pm (daily)